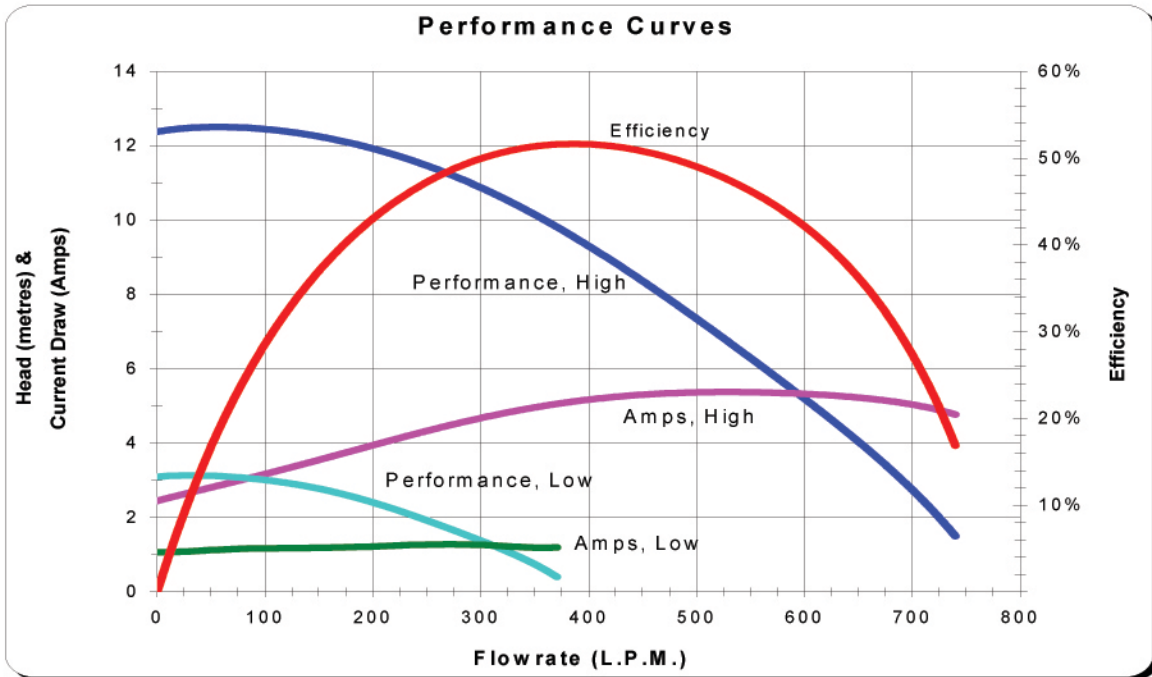




Product Specification Sheet

Model XP2E801524

Aqua-Flo's *energy conscience* offering, the XP2e, provides greater flow rates than the XP2 while improving the overall energy efficiency of the spa, reducing operating costs. The XP2e allows for the use of more jets per pump and in some applications, the elimination of the diverter valve.

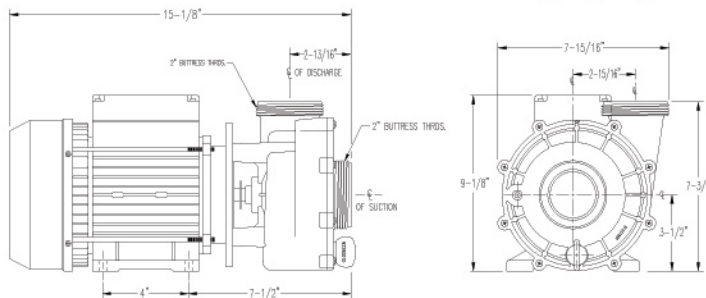


These performance curves are a result of in-lab testing using 3" suction line, actual performance may vary based on manufacturing tolerances and application.

Performance Table						
Metres	Open	4	6	8	10	12
LPM	740	651	564	467	359	185
BEP	379 LPM					

Motor Data							
Manufacturer:	EMG	AF Part Number:	93555380	Model:	N/A		
HP:	1.5	FLA:	6.5/1.5	Volts:	220-240	RPM:	2840-1440
Freq:	50	Phase:	1	Frame:	80	Speed:	2

Shipping Weight: 28.39 lbs Pumps per pallet layer: 10



Gecko Alliance - Pump Division

Maker of Aqua-Flo by Gecko Pumps for the Leisure Water Industry
 5651 Schaefer Avenue, Chino, California 91710-9048 USA, 909.591.7453, Fax: 909.627.5660
www.geckoalliance.com

