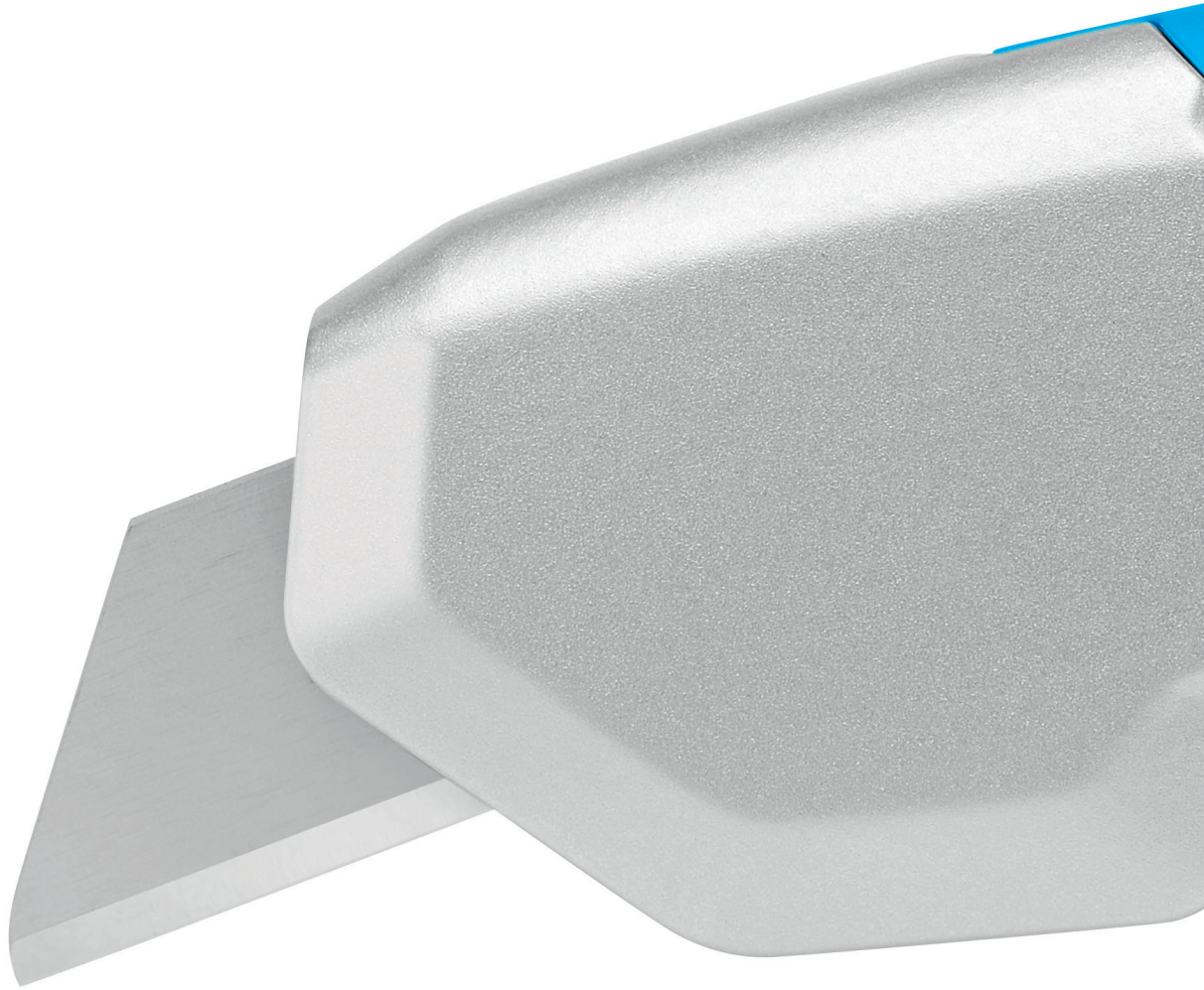


SECUPRO 625

GOES THROUGH THICK AND THIN WITH YOU.

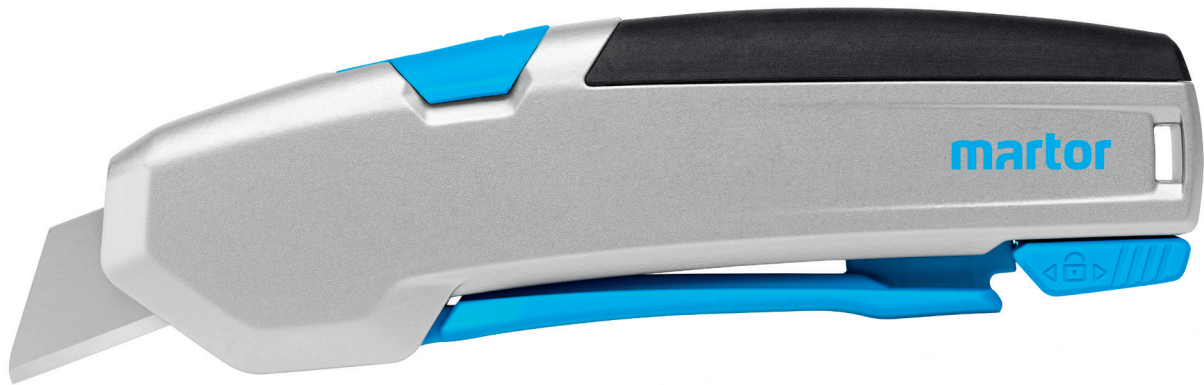


ENJOY SAFETY  
MADE IN SOLINGEN

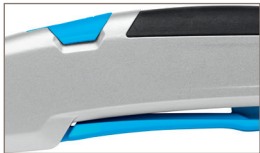
**martor**

# SECUPRO 625

NO. 625001

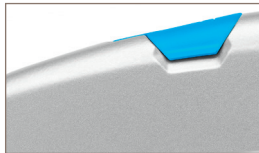


Original size



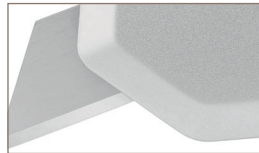
#### Excellent ergonomics

We have rarely produced a cutting tool before that fits so perfectly into the heavy users hand as the SECUPRO 625. The long and smooth lever, the round shape of the handle and the soft-grip at the back of the knife – it's more than worth testing it!



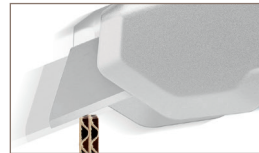
#### Robust and balanced

You can see and feel that the handle is made of high-quality aluminium. Its robust construction goes hand in hand with an optimal weight distribution. Consequently, there's almost no risk of weakening for tool and user. Not even when cutting very heavily.



#### Large cutting depth

The long blade extension is ideal for cutting up to 3-ply cardboard boxes, rubber, material on reels and many more applications. Even this long blade can be changed in a few steps – by pushing the blade change button and pressing the lever, it can be easily pulled out.



#### For many cutting types

The overall package of the SECUPRO 625 is quite unique – and so are all separate features. Even saw cutting is safe – thanks to the protecting blade retraction. And you can enlarge the number of different application areas by simply installing one of the optional blades.



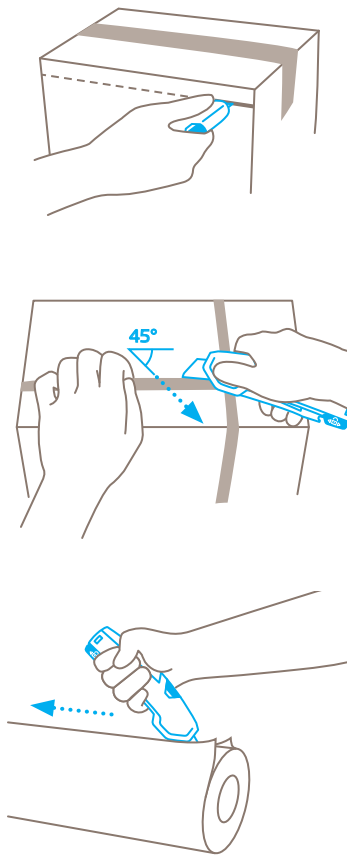
#### Safe along the line

While you rely on the blade retraction at the front part of the handle, there's another safety feature built in for even more protection. You can lock the level and thus avoid to unintentionally releasing the blade.

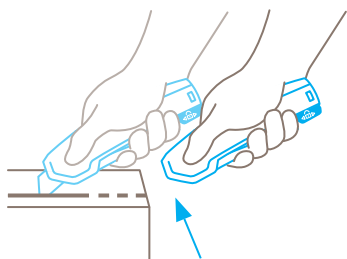
## Long lever. Long blade. Long-lasting enjoyment.

The new SECUPRO 625 goes straight to the top position of our list with squeeze-grip knives. Its aspiration is very clear: premium. Because it offers all that professional users require: an aluminium handle, an easy and smooth lever to release the blade, a large cutting depth combined with a very high safety due to the fully automatic blade retraction, a comfortable blade change. All in all, you will know that you have a high-end cutting tool in your hands.

### Application



### Safety technology



#### Fully automatic blade retraction – a very high degree of safety


The fully automatic blade retraction of the SECUPRO 625 guarantees a very high degree of safety from cut injuries. The blade withdraws into the handle immediately after leaving the material being cut. Even when the lever is still being squeezed.

### PRODUCT FEATURES

#### Technical features

|  |                               |   |                        |
|--|-------------------------------|---|------------------------|
|    | Very high safety              |    | Tool-less blade change |
|    | Very abrasion resistant       |    | Very ergonomic         |
|    | Safety lock                   |    | 2-times usable blade   |
|   | Extended blade length<br>  25 |   | Cutting depth<br>21    |
|  | Soft-grip                     |  | Lanyard hole           |

#### Main cutting materials

|  |                           |   |                              |
|--|---------------------------|---|------------------------------|
|  | Cardboard:<br>up to 3-ply |  | Plastic strapping band       |
|  | Bagged goods              |  | Slabbing material off a roll |
|  | Rubber                    |  | Leather                      |

#### Installed blade



**NO. 60099** 0.63 mm, rounded blade tips, deep-edged

#### Optional blade



**NO. 99** 0.63 mm, deep-edged  
**NO. 199** 0.63 mm, deep-edged, stainless



**NO. 98** 0.63 mm

#### Certificates and awards







# THE PERFECT FIT FOR ALL. DOES THE PERFECT JOB.

## SECUPRO 625

- › Squeeze-grip knife with large cutting depth
- › Fully automatic blade retraction
- › High-quality aluminium handle incl. soft-grip
- › Designed for heaviest strains
- › GS-certified for approved safety

## PRODUCT DETAILS

|  |  |
|--|--|
| <b>Order No.</b>   | NO. 625001.02  |
| <b>Packaging unit</b>  | 1 in single unit box<br>(10 in multipack)  |
| <b>Knife size (L x W x H)</b>                                      | 154 x 22 x 67 mm   |
| <b>Main material</b>   | Aluminium  |
| <b>Weight</b>  | 151.0 g  |
| <b>Cutting depth</b>   | 21 mm  |
| <b>Spare blade<br/>Packaging unit<br/>Size (L x W x Thickness)</b> | NO. 60099.70<br>(10 in dispenser)<br>55.5 x 19 x 0.63 mm   |
| <b>Certified</b>   | GS certificate NO. 602091-<br>5862-55094-2015 C  |
| <b>Accessories</b>   |  |
| BELT HOLSTER L WITH CLIP   |  NO. 9922    |
| USED BLADE CONTAINER   |  NO. 9810   |
| WALL MOUNT BRACKET<br>USED BLADE CONTAINER                         |  NO. 9845   |
| SAFEBOX  |  NO. 108000 |

## CONTACT AND SERVICE

What makes our cutting solutions even safer?  
Our advisory services! We are always on hand,  
to give advice, to provide you with training ma-  
terial, to meet with you in person if necessary.

You will find further information on our website:  
[www.martor.com](http://www.martor.com)



At a glance: the safety poster shows the most important functions and correct usage – perfect for your workplace.



Everything you want to know: dimensions, prop-  
erties, special features and more about our cutting  
tools can be found in the Technical Data Sheet.



Still have questions? You can reach our service  
department on [+49 212 73870-0](tel:+49212738700)