


03/15 (1745)

		AIR DIMENSIONS INC. DEERFIELD BEACH, FL. USA 33442 WWW.AIRDIMENSIONS.COM	
		TITLE Single Head B-Series Pump	
DATE	1/11/2011	DWG NO	Bxx1-xx-AC5
APPROVED BY	FDM	MODEL #	Bxx1-xx-AC5
			SHEET 1 OF 2

Parts List

ITEM	QTY	PART #	DESCRIPTION
1	1	A02411	BEARING
2	1	A02441A	BASE
3	1	A02465	VALVEBODY
4	1	A03461	CAP
5	1	A05401	ECCENTRIC
6	4	A06401A	FOOT
7	1	A06403	FAN
8	1	A06444	WHITE FAN
9	1	A08403	HEAD
10	1	A08461	HOUSING
11	1	A13401	MOTOR
12	1	A14401	COUNTERWEIGHT
13	1	A16407	COVER PLATE
14	1	A16461	PLATE
15	1	A18402	TOLERANCE RING
16	1	A18461	CONNECTING ROD
17	1	A19013	ECCENTRIC SCREW
18	2	A19021	COVER SCREW
19	4	A19309	HEAD SCREW
20	2	A19419	HOUSING SCREW
21	1	A19467	PLATE SCREW
22	4	A23402	WASHER
23	1	*A04461	DIAPHRAGM
24	1	*A07411	GASKET
25	1	*A23461	WASHER

*RECOMMENDED SPARE PART KITS

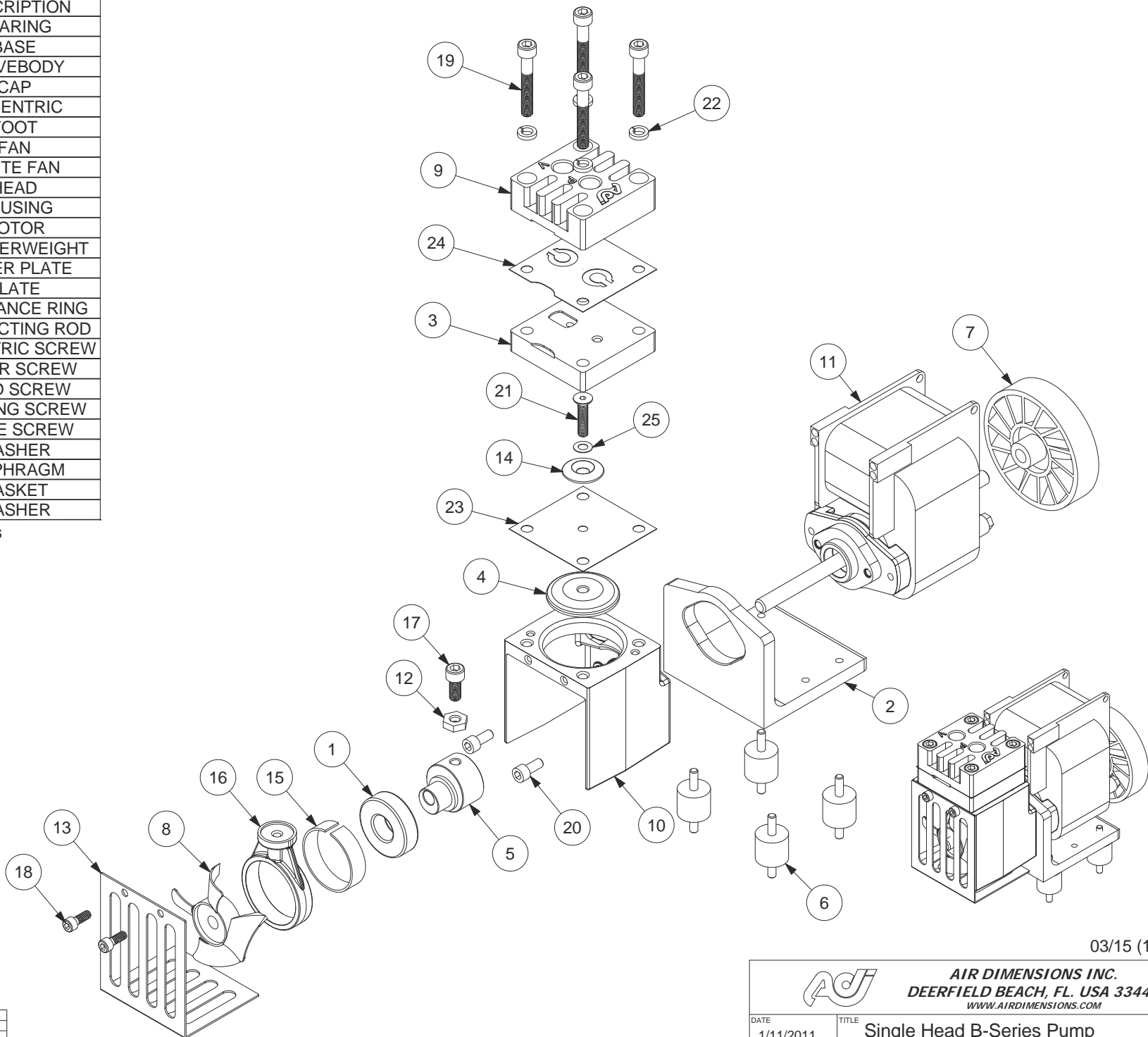
DIAPHRAGM KITS	
11403	VITON
11461	2-PLY TEFLON

INCLUDES ITEMS 23-25


ALTERNATE AND OPTIONAL PARTS	
PART #	DESCRIPTION
A02460	VALVEBODY - ALUM TFE CO
A02465	VALVEBODY - 316ss
A02466	VALVEBODY - ALUM
A02469	VALVEBODY - 316ss TFE CO
A02495	VALVEBODY - SILCONERT
A04403	DIAPHRAGM - VITON
A04461	DIAPHRAGM - 2 PLY TEFLON
A07403	GASKET - VITON
A07411	GASKET - TEFLON
A08403	HEAD - 316ss
A08404	HEAD - ALUM
A08407	HEAD - 316ss TFE CO
A08408	HEAD - ALUM TFE CO
A08493	HEAD - SILCONERT
A16461	PLATE - 316ss
A16465	PLATE - 316ss TFE CO
A16491	PLATE - SILCONERT

ADS-121V 2/7/12

ALTERNATE PLATE SCREWS	
PART #	DESCRIPTION
A19467	PLATE SCREW - 316ss
A19474	PLATE SCREW - 316ss TFE CO
A19497	PLATE SCREW - SILCONERT



03/15 (1745)

		AIR DIMENSIONS INC. DEERFIELD BEACH, FL. USA 33442 WWW.AIRDIMENSIONS.COM	
DATE	TITLE		
1/11/2011	Single Head B-Series Pump		
APPROVED BY	DWG NO	MODEL #	
FDM	Bxx1-xx-AC5	Bxx1-xx-AC5	
			SHEET 2 OF 2